



Creating Value Through Discoveries

RIU CONFERENCE

17 February 2021



Corporate overview



CAPITAL STRUCTURE

455M
SHARES ON ISSUE

157M
LISTED OPTIONS
Exercise Price \$0.05

\$36M
MARKET CAP
as at Feb 15, 2021 (8c)

\$3.14M
CASH
as at Dec 31, 2020

SHAREHOLDERS

Top 20 =	<i>(excluding Directors)</i>	<i>(including Directors)</i>
	40%	70%

BOARD OF DIRECTORS & MANAGEMENT

Mr John Terpu, Executive Chairman

- *More than 20 years' commercial and management experience*
- *Former MD of Conquest Mining Limited (now Evolution Mining Limited) for 12 years and involved in the discovery of the Mt Carlton gold/silver/copper project*

Mr Sean Gregory, Chief Executive Officer

- *More than 20 years' experience as a geologist and project developer including Barra Resources (MD, NED), Min Res (GM Technical), MMX (GM Geology), BHP (Principal Geo)*
- *Track record of numerous successful mine developments and corporate transactions*

Ms Kathleen Bozanic, Non-Executive Director

Mr Andrew Caruso, Non-Executive Director

Mr Mark Petricevic, CFO & Company Secretary

Key Assets and Fundamentals



Strategic Gold Projects

- Laverton Gold District (>25Moz) – Golden Star, Cox’s Find, Mon Ami
- North QLD Gold District (>20Moz) – Edinburgh Park
- Proximity of adjacent major producers leverage the value proposition

Extensive Work Program

- 5,000m RC drilling at Cox’s Find and Mon Ami; results imminent
- Aggressive Golden Star drilling planned for Q2 2021
- QLD exploration team ranking drill targets for 2021

The Right Team

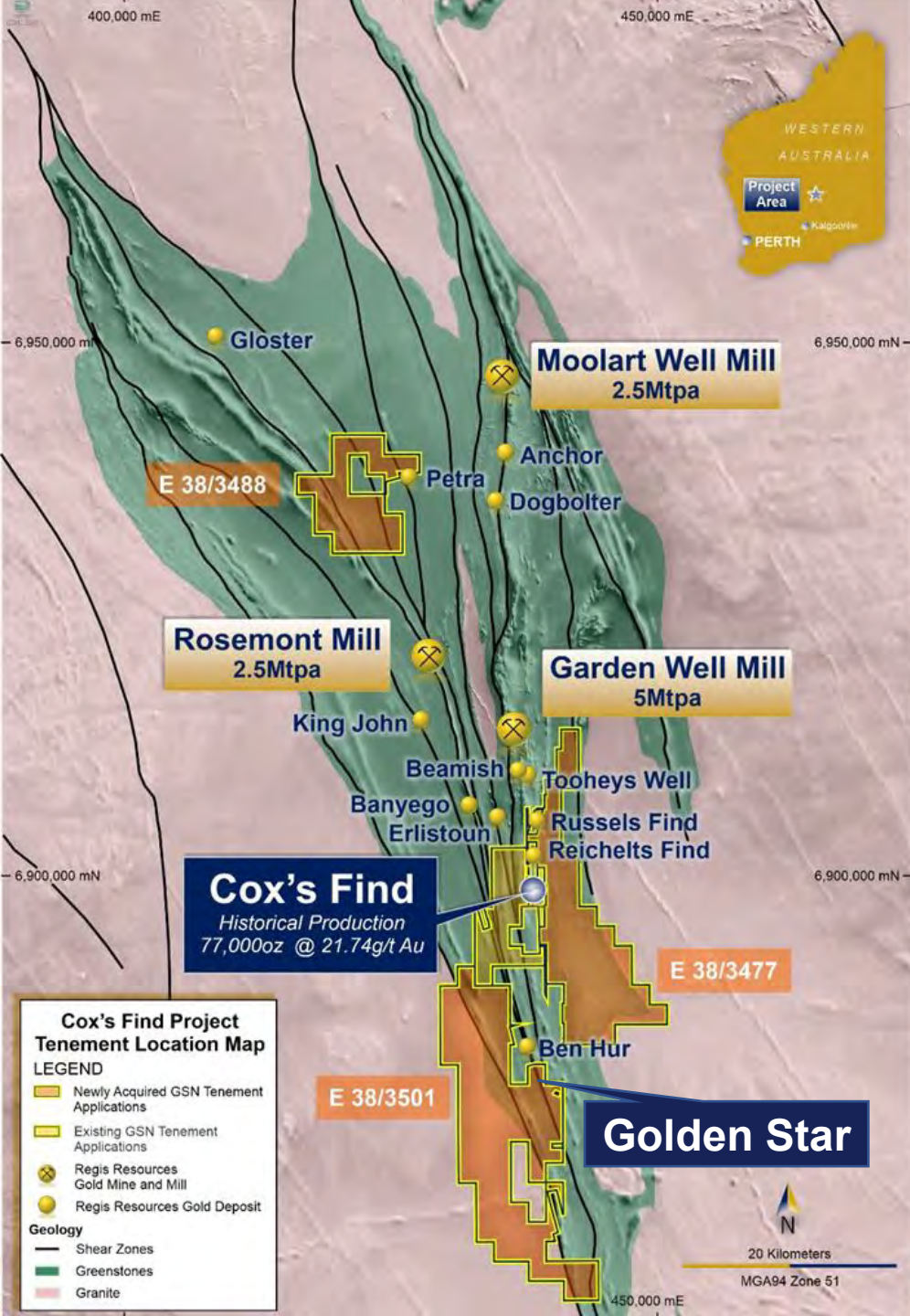
- Management team with proven track record in value creation
- Advanced exploration infrastructure in place



Western Australia

Duketon Belt

- Recent agreements now bring GSN's Duketon Belt landholding¹ to 459km²
- GSN the second largest landholder in the Duketon Belt with 10% of the greenstone
- >50km strike length of the main mineralised structures in the belt to explore
- All tenement applications due for grant this quarter

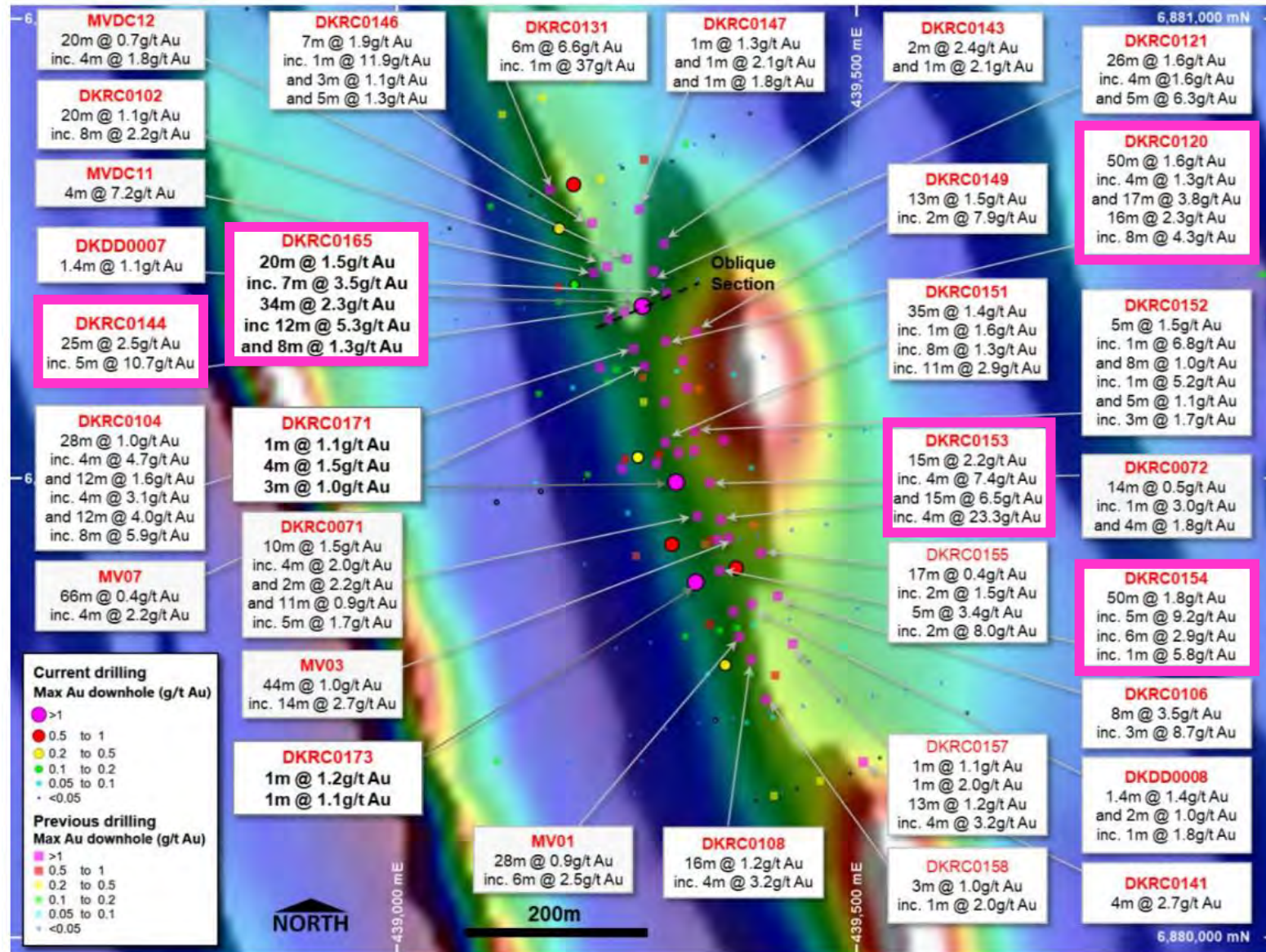
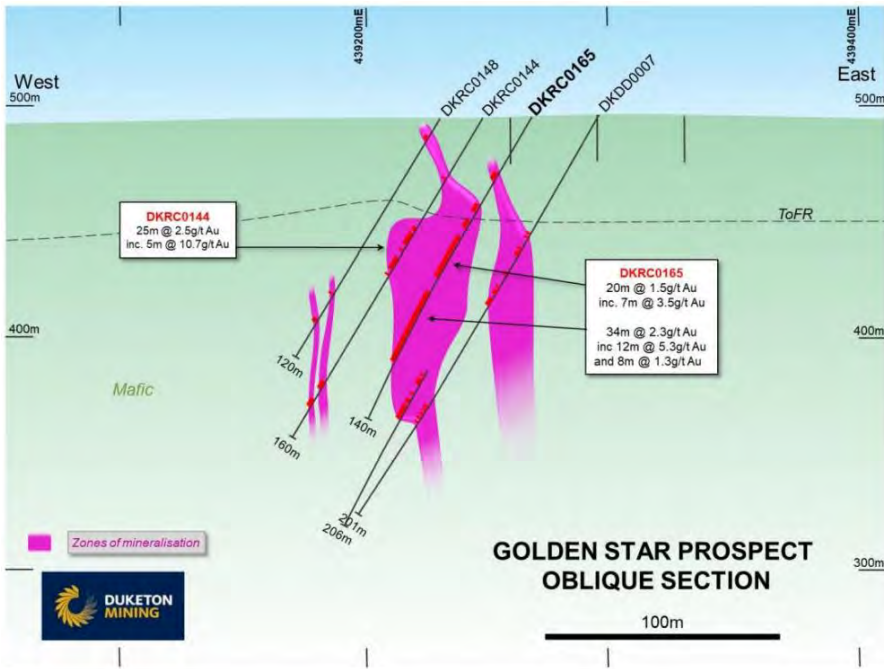


¹ Including tenement applications and exclusive irrevocable options

Golden Star Deposit

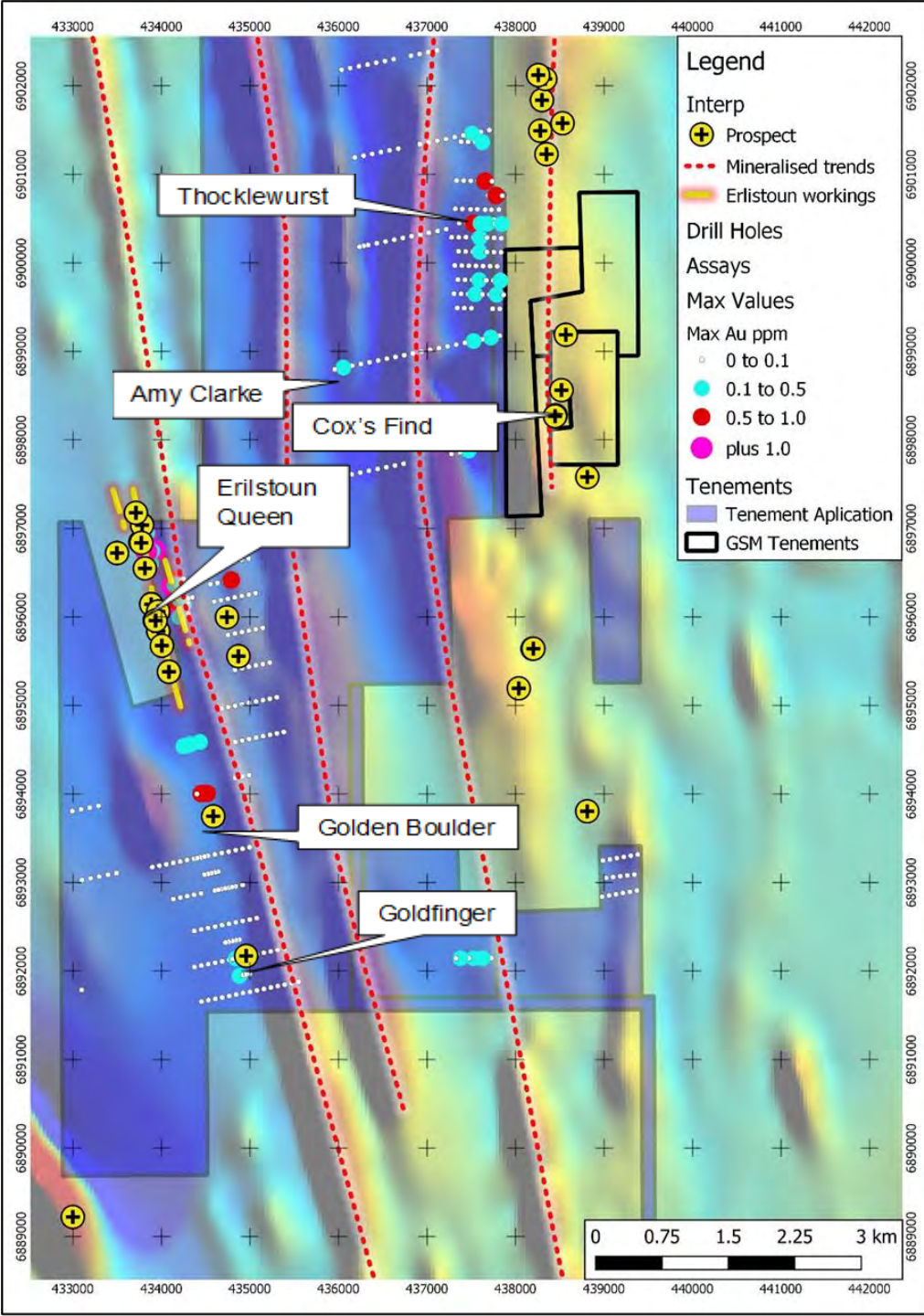


- Extensively drilled in 2017-18
- >600m strike of thick continuous stacked gold mineralisation¹
- Open in all directions
- Drilling planned Q2 2021



¹ Refer to ASX Announcement 2/2/21

Exploration Targets

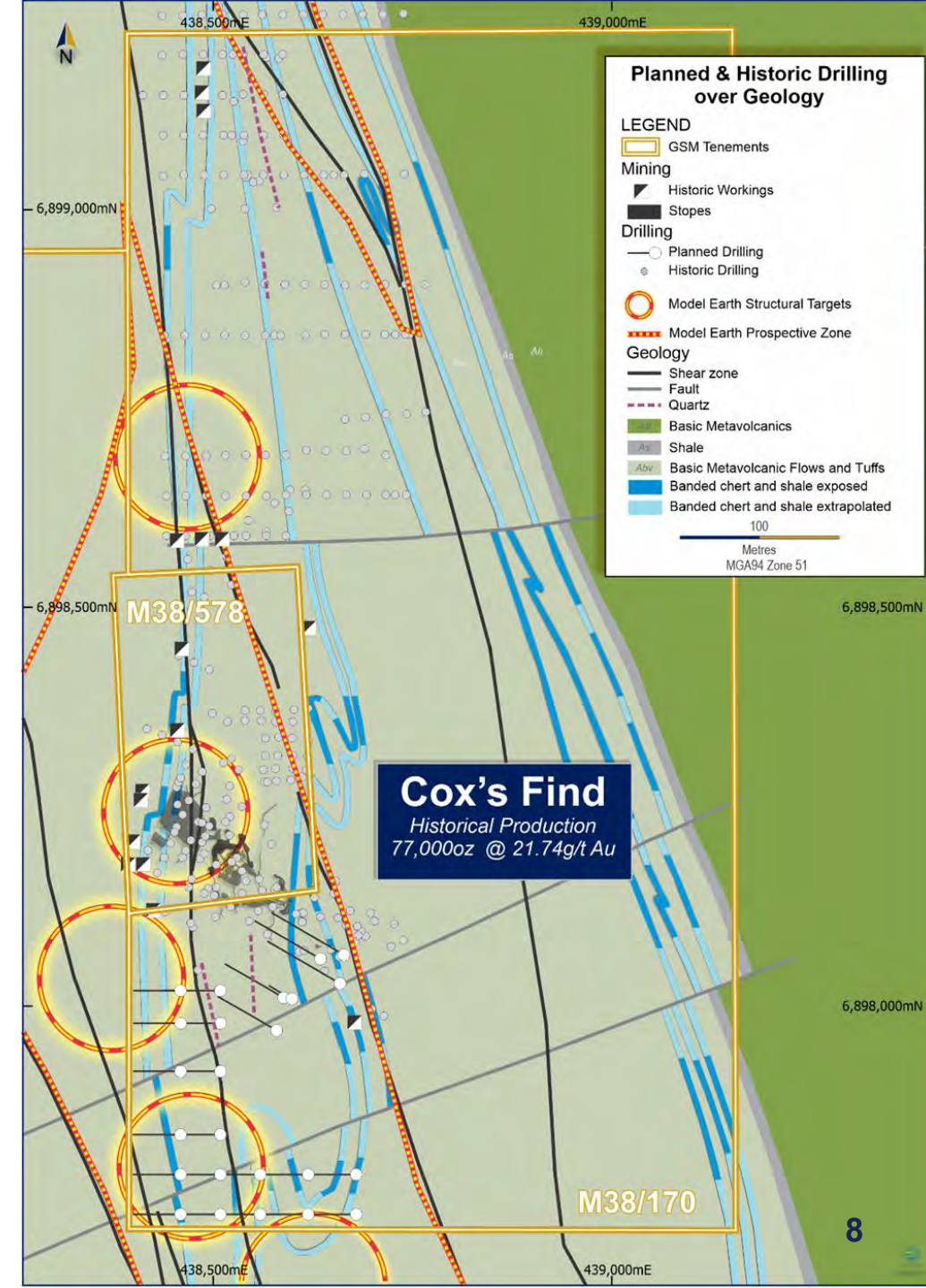


- Historical data compilation only completed on 1 of 4 large tenement applications¹
- Outstanding targets generated from historical soil sampling and RAB drilling justify a high-priority exploration effort
- GSN now expects dozens of targets to emerge necessitating prioritisation

¹ Refer to ASX Announcement 5/11/20 for detail on the gold targets on E38/3518

Cox's Find: Results Pending

- Historical Gold Production 77kOz @ 22 g/t Au
- 2019-2020 GSN drilling results¹:
 - 5m @ 80.0 g/t from 160m incl. 1m @ 404 g/t Au
 - 5m @ 31.2 g/t from 134m incl. 1m @ 143 g/t Au
 - 5m @ 14.5 g/t from 140m incl. 2m @ 28.9 g/t Au
 - 2m @ 36.0 g/t from 146m incl. 1m @ 68 g/t Au
- RC drilling results pending:
 - Down-plunge extensions to Cox's Find
 - Possible along strike repeat gold deposits

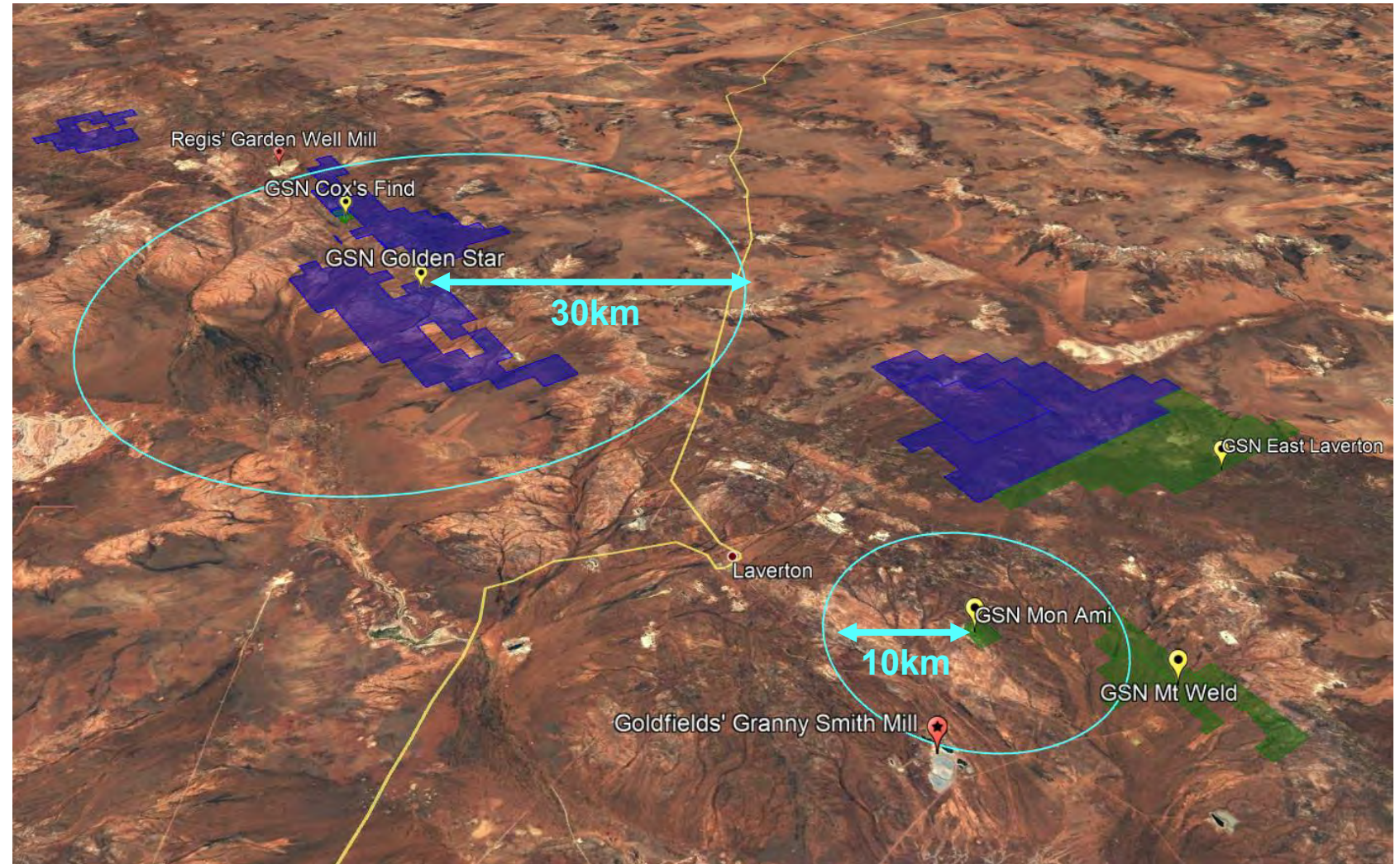


¹Refer to ASX Announcements 26/11/19, 4/12/19, 19/12/19, 29/7/20, 8/9/20 for details of Cox's Find drilling results

WA Gold Projects: Close to Operating Mills



- Golden Star and Cox's Find within 30km of Regis' low-grade Garden Well Mill
- Mon Ami is only 10km from Goldfields' Granny Smith Mill (operating at 50% capacity)¹
- 8 potential milling solutions within 150km of Laverton



¹Source: www.goldfields.com/australia-region.php "3.5Mt Capacity" vs June 2020 Half Yearly Report of 877kt processed at Granny Smith

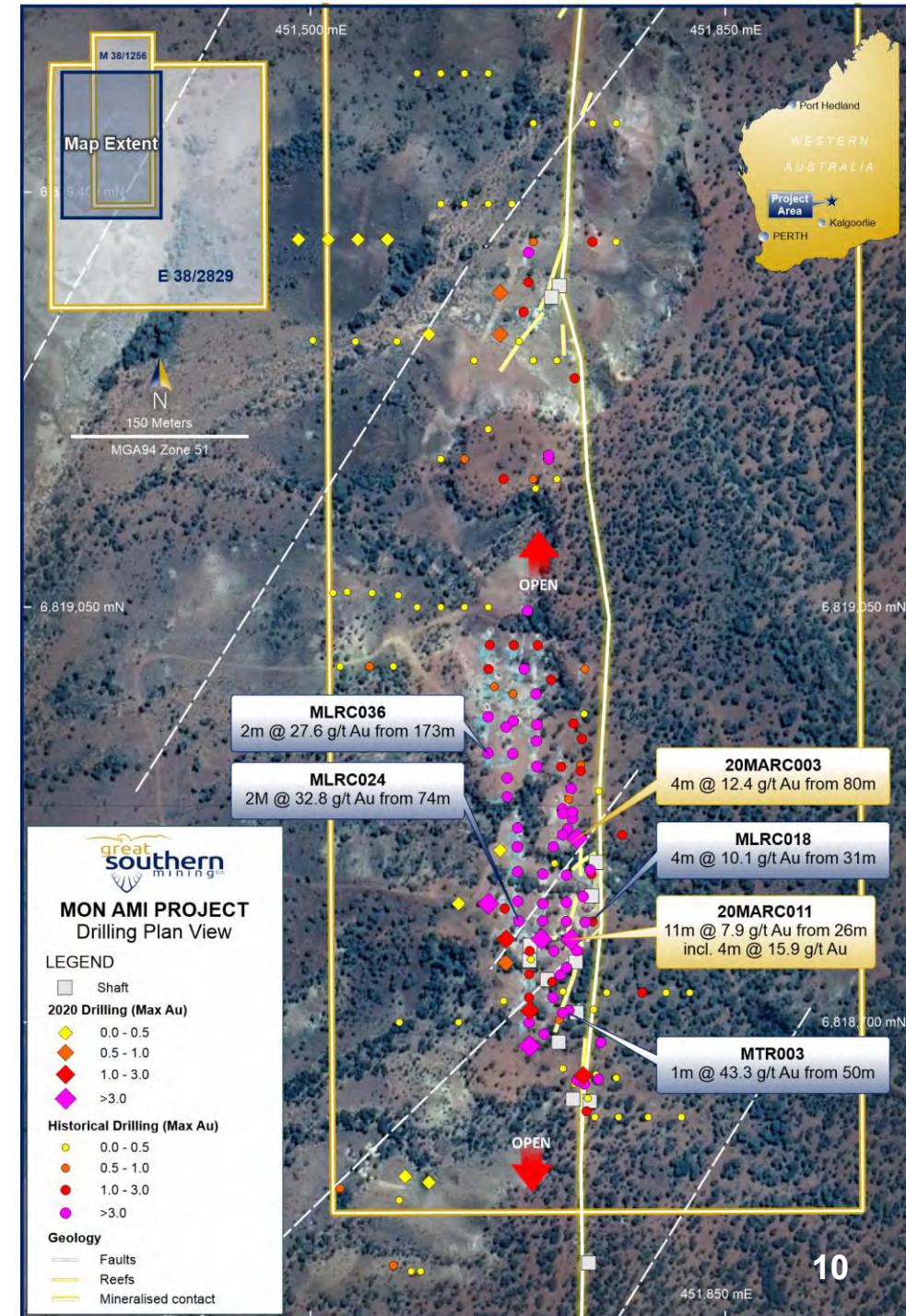
Mon Ami: Near Term Open Pit

- Inferred Mineral Resource 1.1Mt @ 1.7 g/t Au for 59 koz Au¹
- Resource classification upgrade planned Q2
- Metallurgical recovery average 95% in oxide and transition zone²
- Development Studies underway targeting a mining approval in 2021
- Aim to present “shovel ready” project to nearby mills

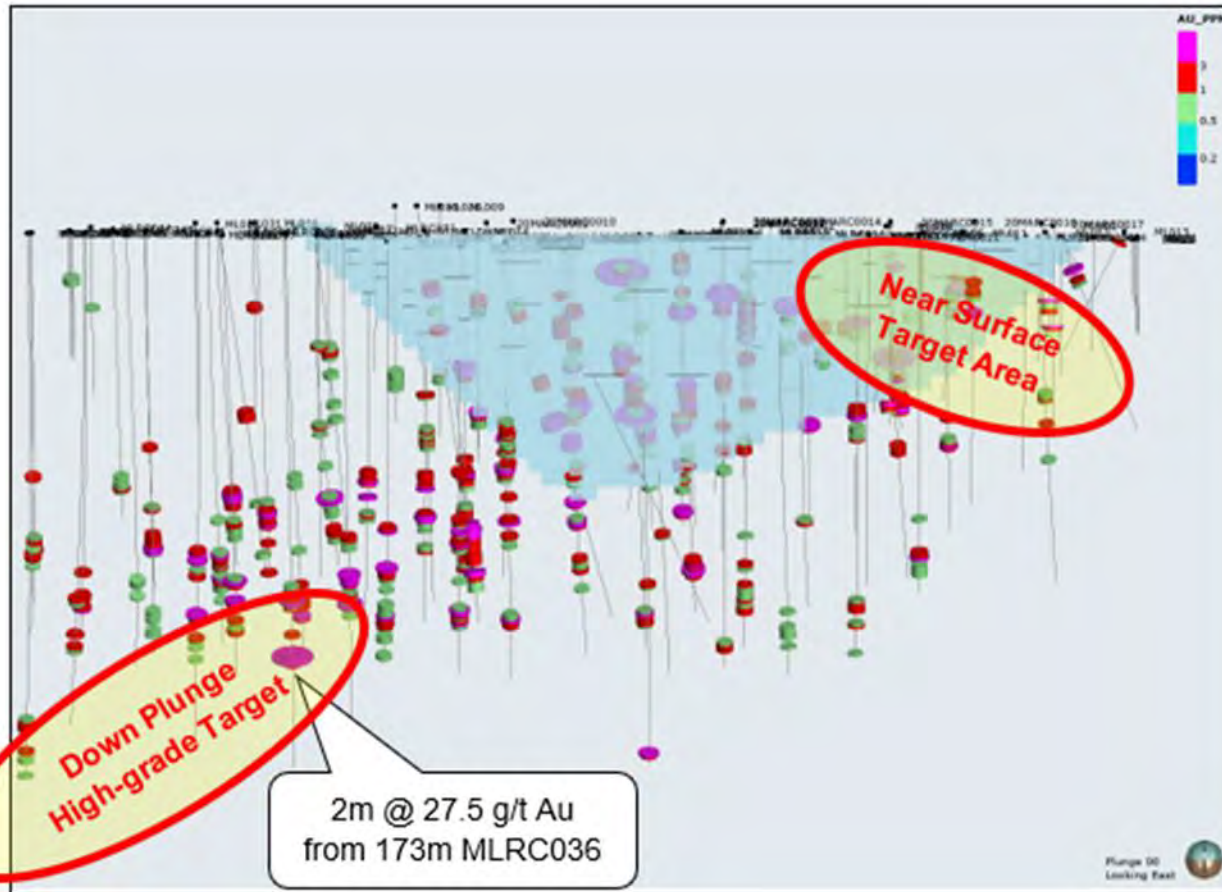
¹Refer to ASX Announcement 7/11/18 for the Mon Ami Mineral Resource

²Refer to ASX Announcement 25/1/19 for the Mon Ami Metallurgy Results

³Refer to ASX Announcement 12/8/20 for the Mon Ami Drilling Results



Mon Ami: Results Imminent



- January 2021 RC drilling targeted:
 - Near-surface, high-grade mineralisation to improve open pit development potential; and
 - Deeper high-grade target analogous to Ida H high-grade underground mine 7km along strike (historical production 176Koz @ 22.8 g/t Au)
- Assay results imminent

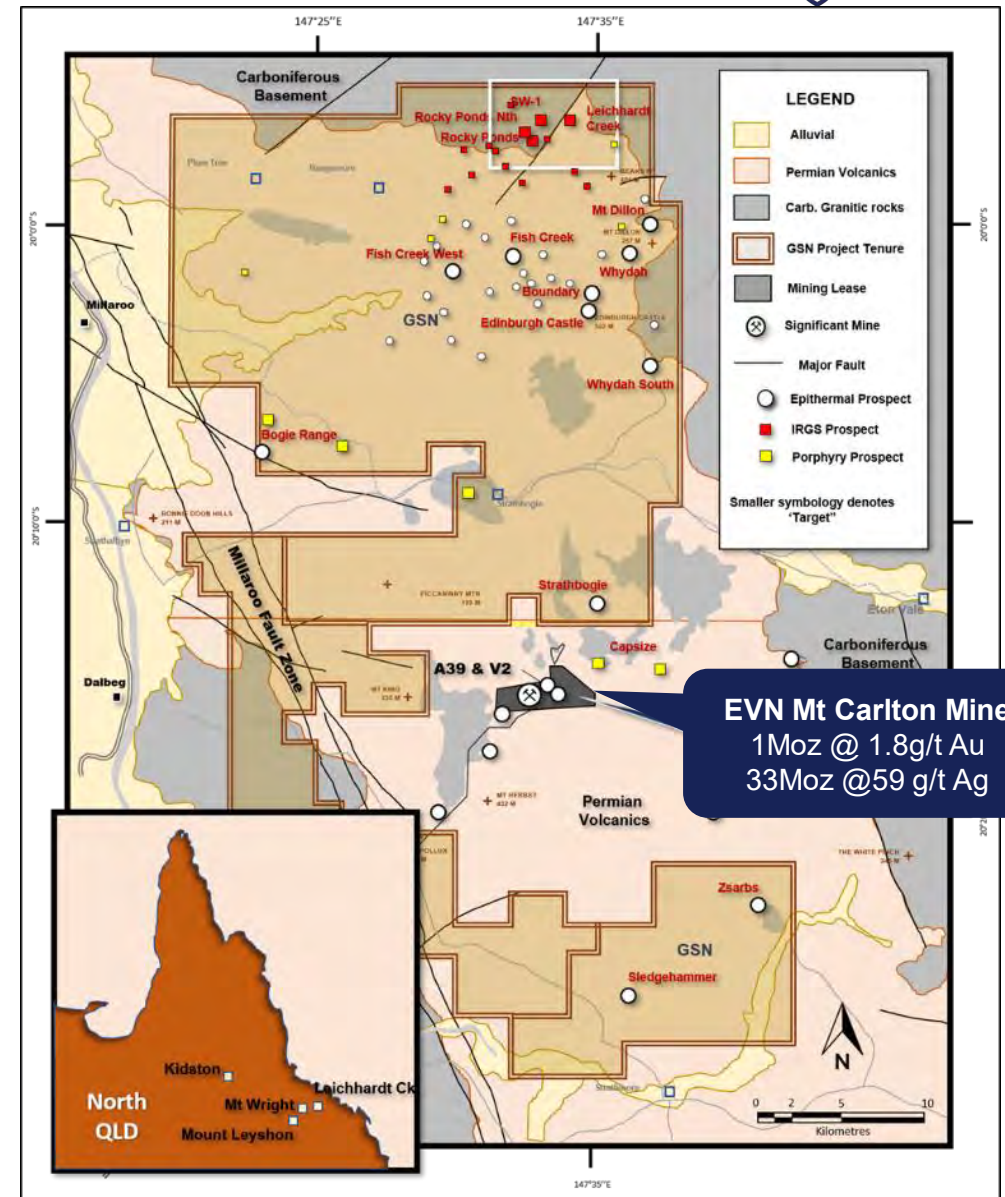
Queensland



North QLD: Edinburgh Park

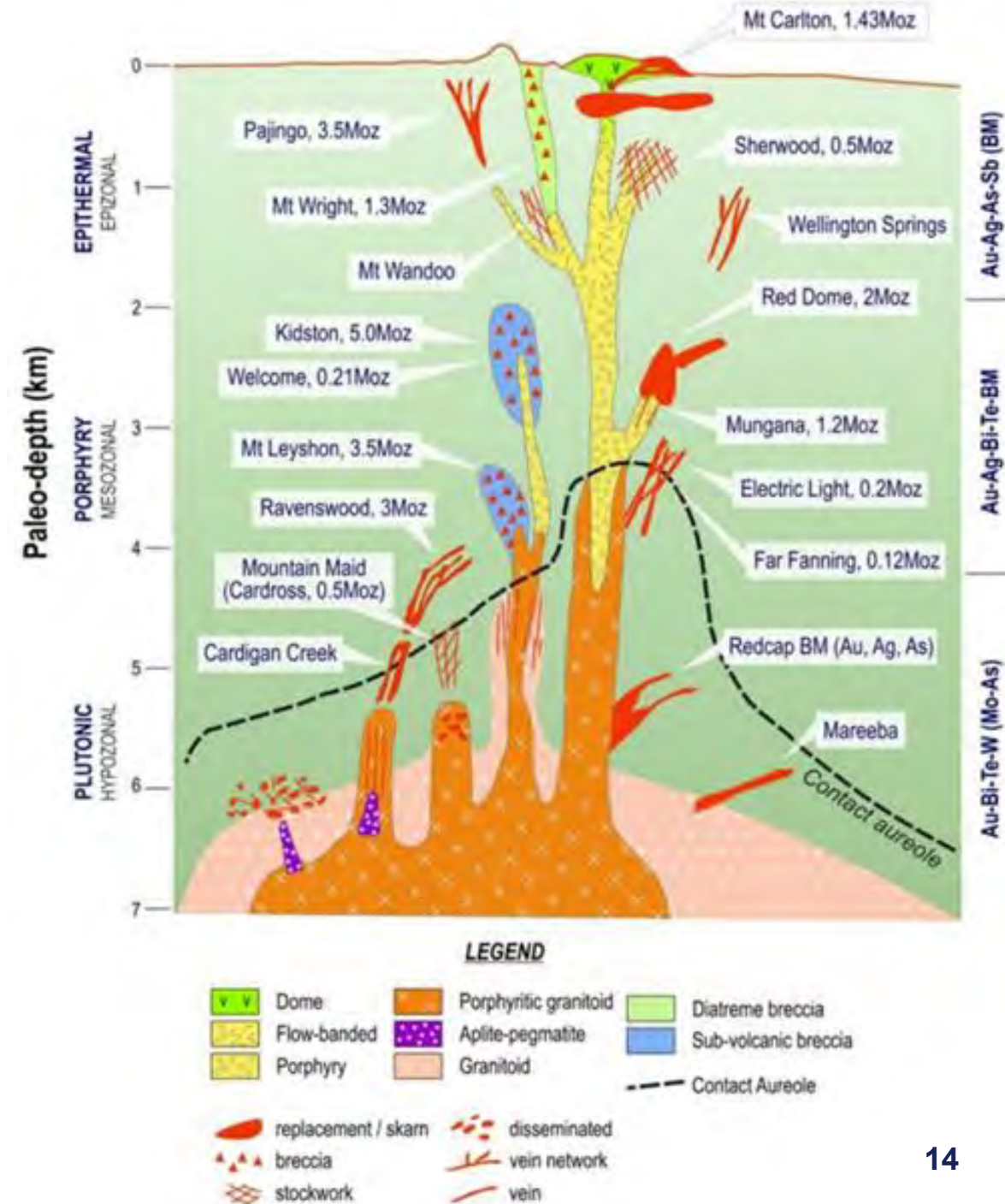


- GSN has assembled >1,000km² surrounding EVN's Mt Carlton >1Moz gold, silver, and copper mine
- GSN has marshalled exploration infrastructure and a team of expert geologists, geochemists and academics
- Ranking of targets underway for planned drilling in 2021 dry season



QLD: Intrusive Related Gold Systems

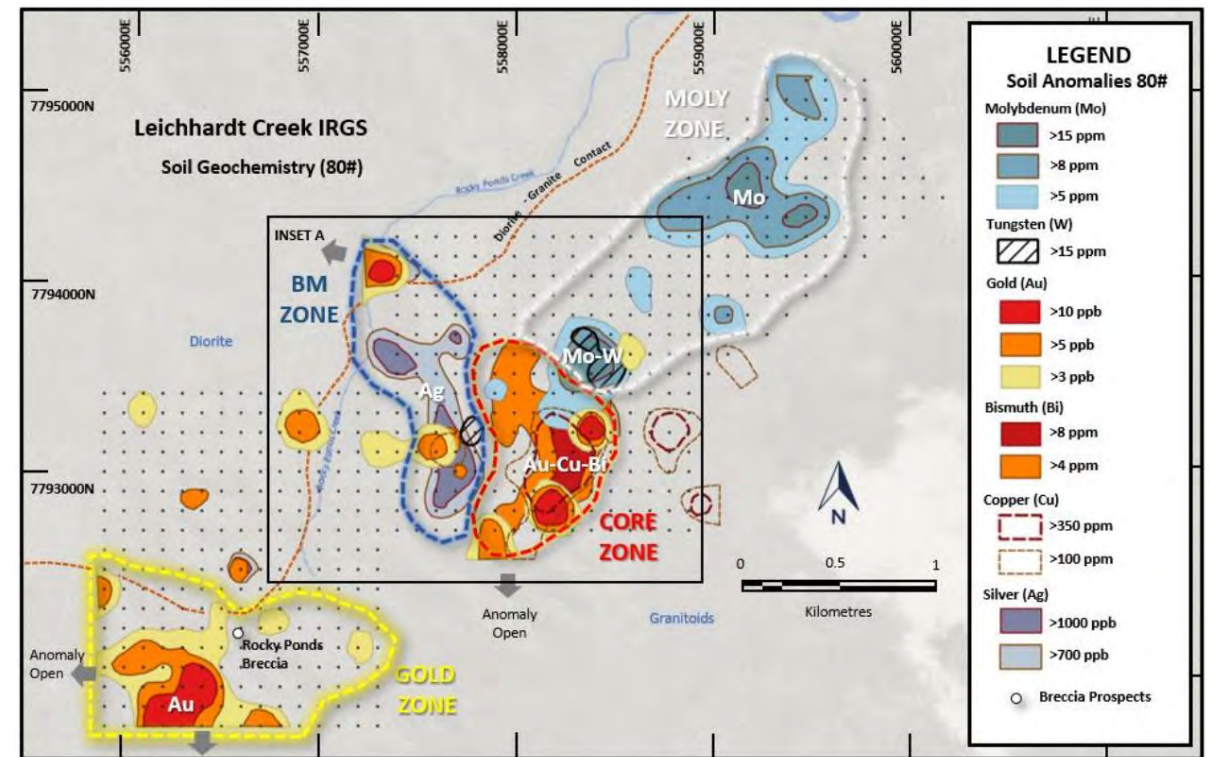
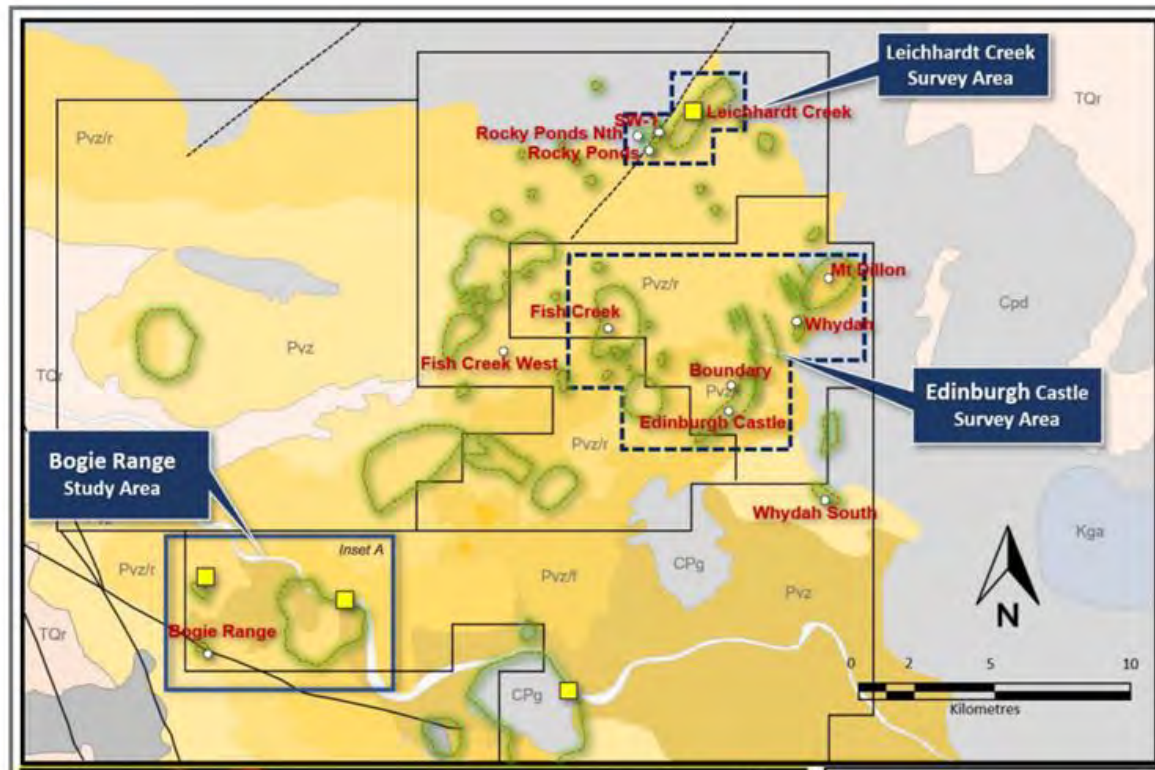
- Tectonic subduction zone creating porphyry intrusions and >20Moz related gold mineralisation
- Polymetallic systems with credits for gold, copper, silver and moly
- Multiple mineralisation styles possible within large landholding
- Excellent outcrop and metal zonation enable discovery using methodical geochemical and alteration mapping



QLD: Edinburgh Park Exploration



- Hyperspectral survey co-funded by EVN illuminated 19 targets
- Mapping and Soil Sampling at Leichhardt Creek has identified alteration and metal zonation consistent with a large IRGS system¹
- Soil surveys at 4 more targets just received and drill target ranking underway



¹Refer to ASX Announcement 27/5/20 for the hyperspectral survey 20/7/20 for the Leichhardt Creek soil survey

Why GSN?



- ✓ Strategic landholdings in Tier 1 Australian gold districts
- ✓ Genuine potential for major gold and other discoveries
- ✓ Value proposition enhanced by hungry neighbouring mills
- ✓ Quality Board with skin in the game and experienced exploration teams
- ✓ Active exploration programs underway with strong results pipeline

Contact

John Terpu
Executive Chairman

T: +61 8 9240 4111
E: admin@gsml.com.au

www.gsml.com.au

Sean Gregory
Chief Executive Officer

Suite 4, 213 Balcatta Rd
BALCATTWA WA 6021

Competent Persons Statement and Disclaimer



Deposit	Competent Person	Employer	Professional Institute
Golden Star, Cox's Find (2020) and Mon Ami (2020) Exploration Results	Simon Buswell-Smith	Great Southern Mining Ltd	MAIG
Edinburgh Park, Cox's Find (2019) and Mon Ami (2019) Exploration Results	Dr Bryce Healy	Noventum Group Pty Ltd	MAIG
Mon Ami Mineral Resource	Dr Michael Cunningham	SRK Consulting (Australasia) Pty Ltd	MAusIMM, MAIG

Competent Persons Statement

The information in this report that relates Exploration Results and Mineral Resources is based on the information of the Competent Persons listed in the table above. Each of the Competent Persons have sufficient experience relevant to the style of mineralisation and type of deposit under consideration and to the activity they are undertaking to qualify as Competent Persons under the JORC Code (2012). For new information each consent to the inclusion in the report of the matters based on his information in the form and context in which they occur. Previously announced information is cross referenced to the original announcements. In these cases, the Company is not aware of any new information or data that materially affects the information presented and that the technical parameters underpinning the estimates continue to apply and have not materially changed. The Company confirms that the form and context in which the Competent Persons findings are presented have not been materially modified from the original market announcements.

Disclaimer: No representation or warranty, express or implied, is made by the Company that the material contained in this presentation will be achieved or proved correct. Except for statutory liability which cannot be excluded, each of the Company, its directors, officers, employees, advisors or agents expressly disclaims any responsibility for the accuracy or completeness of the statements made in the presentation and excludes all liability whatsoever (including in negligence) for any loss or damage which may be suffered by any person as a consequence of any information in this presentation or any effort or omission therefrom. Any opinions expressed in the presentation are subject to change without notice.

Forward Looking Statements: Forward- looking statements are only predictions and are not guaranteed. They are subject to known and unknown risks, uncertainties and assumptions, some of which are outside the control of the Company. Past performance is not necessarily a guide to future performance and no representation or warranty is made as to the likelihood of achievement or reasonableness of any forward-looking statements or other forecast. The occurrence of events in the future are subject to risks, uncertainties and other factors that may cause the Company's actual results, performance or achievements to differ from those referred to in this announcement. Given these uncertainties, recipients are cautioned not to place reliance on forward looking statements. Any forward- looking statements in this announcement speak only at the date of issue of this announcement. Subject to any continuing obligations under applicable law and the ASX Listing Rules, the Company, its directors, officers, employees and agents do not give any assurance or guarantee that the occurrence of the events referred to in this announcement will occur as contemplate. Statements regarding the Company's plans with respect to Mineral Resources, exploration programs and future developments are forward-looking statements. There can be no assurance that the Company's plans will proceed at stated times in the future. Additionally, future drilling programs and outcomes presented are based on current estimates using information available at the time of the document's preparation. There is no guarantee that the programs will confirm the presence of additional mineral resources. Any opinions expressed in the presentation are subject to change without notice.